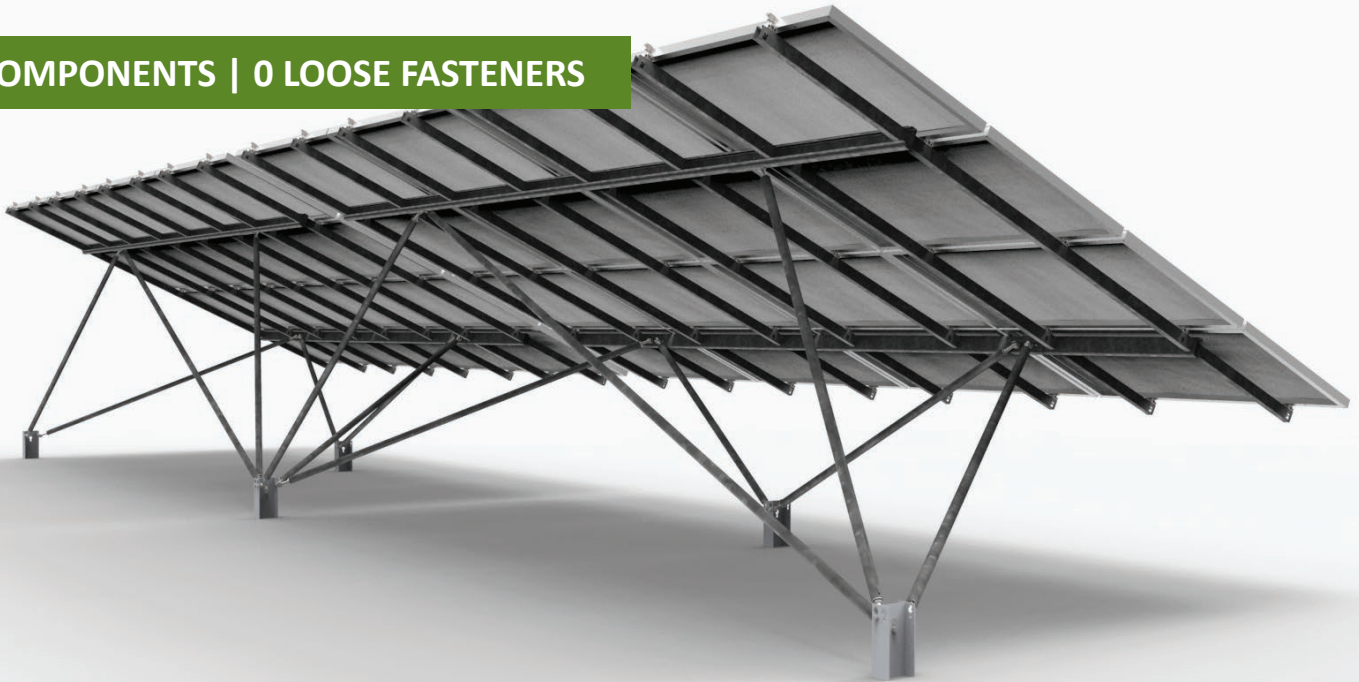


# Sun Bear

## Ground Mount System

4 COMPONENTS | 0 LOOSE FASTENERS



### Breaking New Ground

The Sun Bear™ ground mount system is not your traditional ground mount system. Just take a look – you’ll recognize that the Sun Bear design sets a new standard in the market, from its distinct truss structure to its efficient use of materials. With only four major components, three installation tools, and zero loose fasteners, the Sun Bear system drastically simplifies construction.

### Comprehensive Project Delivery

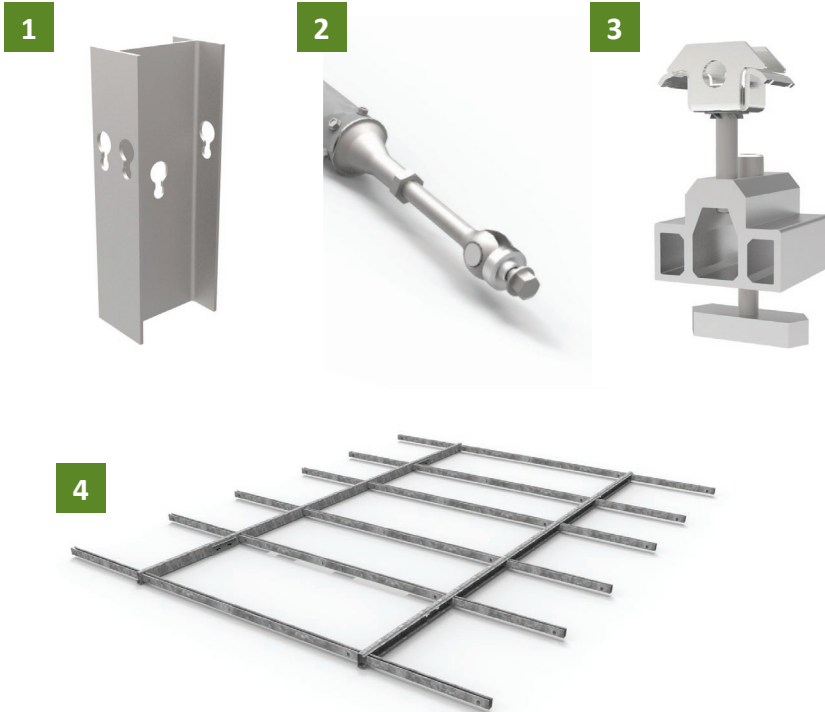
- Foundation Engineering
- Geotechnical Services
- Third-party Licensed Engineering Stamps
- Racking Construction Drawings
- Certified Installer Program



# Sun Bear Ground Mount System



## Four Major Components and Zero Loose Fasteners



### 1 Sun Bear Foundation

Helical, W6, and earth screw piles. Includes built-in keyhole design for easy attachment to Sun Bear Struts.

### 2 Sun Bear Strut

Galvanized steel struts with integrated turnbuckles. Locks to foundation using built-in fastener and jam nut design.

### 3 Sun Bear Claw

Used to secure modules to the Sun Bear Frame without any loose fasteners.

### 4 Sun Bear Frame

Pre-assembled and pre-squared frame designed with nested rafters to optimize shipping capacity.

**For Product and Sales Information:**  
978.688.4900 or [sales@panelclaw.com](mailto:sales@panelclaw.com)

[www.panelclaw.com](http://www.panelclaw.com)  
© 2013 PanelClaw, Inc.

Printed on recycled paper

## Specifications

### Grade of Terrain

Default slope up to 10°

### Module Tilt Angle

20°, 25°, 30°

### Table Options

#### Landscape with two sizes:

60-cell modules: 16 modules (4x4) or 8 modules (4x2)

72-cell modules: 12 modules (4x3) or 8 modules (4x2)

### Foundation Location Tolerance

12" diameter and 6" height

### Ground Clearance

Minimum of 36" lower drip-edge height

### Wind and Snow Load

Designed to ASCE and IBC requirements for snow loads greater than 50 PSF and wind speeds above 140 MPH

### Material Composition

**Sun Bear Claw:** Aluminum 6061-T6 and 304 SS

**Sun Bear Frame and Sun Bear Struts:**

Galvanized Steel and Zinc-Aluminum Alloy

**Sun Bear Foundations:** Hot-dipped galvanized steel (W6)

### Thermal Growth Capacity

Inherently designed to accommodate thermal growth and contraction in all environments

### Wire Management

Stainless steel hooks in multiple sizes for easy East-West wire management

### Integrated Grounding

ETL Classified to UL 2703